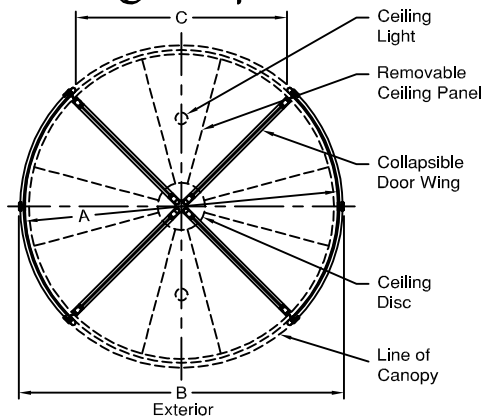


1 Elevation



2 Plan View

Standard Door Sizes

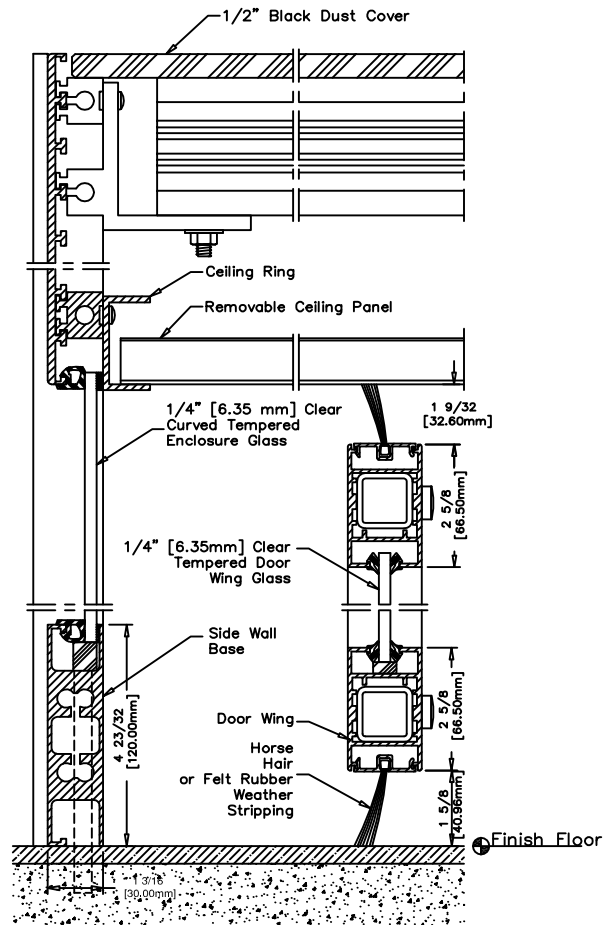
Inside Diameter "A"	Outside Net Frame "B"	Throat Opening "C"
6'-6"[2090mm]	6'-9"[2060mm]	4'-3 3/4"[1315mm]
7'-0"[2130mm]	7'-3"[2210mm]	4'-8"[1420mm]
7'-6"[2285mm]	7'-9"[2360mm]	5'-0 1/4"[1530mm]
8'-0"[2440mm]	8'-3"[2515mm]	5'-4 1/2"[1640mm]
8'-6"[2590mm]	8'-9"[2670mm]	5'-8 3/4"[1745mm]
9'-0"[2745mm]	9'-3"[2820mm]	6'-1 3/4"[1875mm]
9'-6"[2895mm]	9'-9"[2970mm]	6'-6"[1980mm]
9'-9"[2970mm]	10'-0"[3050mm]	6'-8 1/4"[2040mm]

Options:

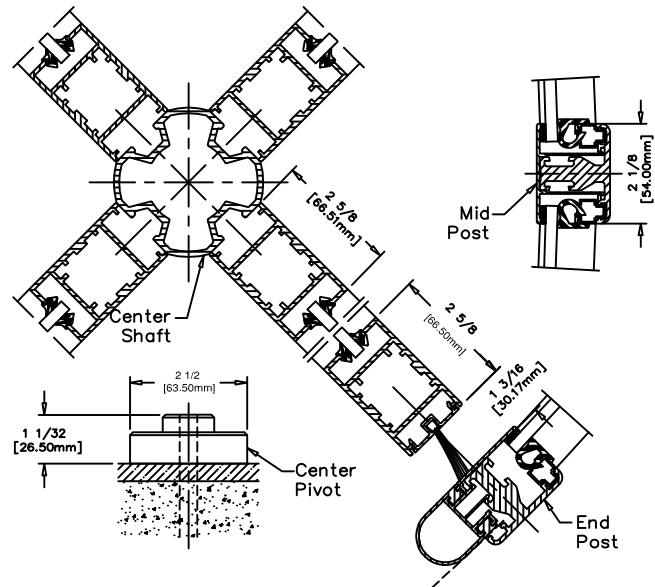
- 120V Lights/Controls Power Requirements
- Extended Door Heights (Contact Factory) 7' - 10' HUC (2130 - 3050mm)
- Extended Canopy Heights (Contact Factory)
- Slidebolt Lock
- Medium Style Door Wing
- Herculite Style Door Wing
- Electric Locking with Post Mounted Control
- One Piece Sidewall Glass
- Horse Hair or Felt Rubber Weather Stripping

Installation:

Door installs on Finish Floor (No recess, rings, or cutouts required)
 Floor Must be dead level.
 Door Ties to Adjacent Storefront or Curtain-wall System for Lateral Stability.
 Adjacent Construction Not to Bear Down on any Part of Revolving Door.



3 Vertical Sections



4 Horizontal Sections