

Standard Size Doors

Inside Diameter "A"	Outside Net Frame "B"	Throat Opening "C"
7'-0"	7'-3"	3'- 1 5/8"
7'-6"	7'-9"	3'-4 5/8"
8'-0"	8'-3"	3'-7 5/8"
9'-0"	9'-3"	4'-2 5/8"
9'-9"	10'-0"	4'-7 1/4"

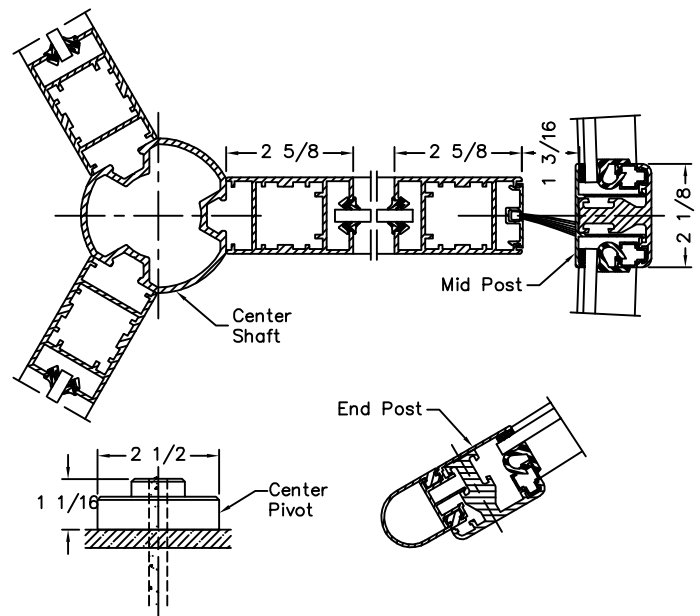
Options:

- Ceiling Lights (120 V Power from Above)
- Extended Door Heights (Contact Factory)
- Extended Canopy Heights (Contact Factory)
- Slidebolt lock
- Medium Style Door Wing
- Electric Locking with Post Mounted Control
- Horse Hair or Felt Rubber Weather Stripping

Installation:

Door Installs on Finish Floor (No recess, rings, or cutouts required)
Floor Must Be Dead Level.
Door Ties to Adjacent Storefront or Curtain-Wall System for Lateral Stability.
Adjacent Construction Not to Bear Down on any Part of Revolving Door.

3 Vertical Sections



4 Horizontal Sections