

Standard Door Sizes

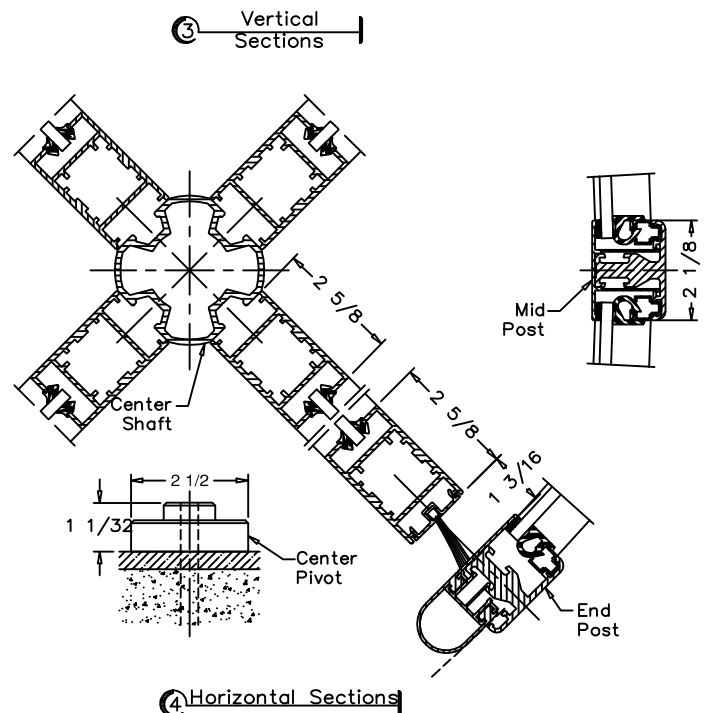
Inside Diameter "A"	Outside Net Frame "B"	Throat Opening "C"
6'-6"	6'-9"	4'-3 3/4"
7'-0"	7'-3"	4'-8"
7'-6"	7'-9"	5'-0 1/4"
8'-0"	8'-3"	5'-4 1/2"
9'-0"	9'-3"	6'-1 3/4"
9'-9"	10'-0"	6'-8 1/4"

Options:

- Ceiling Lights (120 V Power from Above)
- Extended Door Heights (Contact Factory)
- Extended Canopy Heights (Contact Factory)
- Slidebolt Lock
- Medium Style Door Wing
- Electric Locking with Post Mounted Control
- One Piece Sidewall Glass
- Horse Hair or Felt Rubber Weather Stripping

Installation:

Door Installs on Finish Floor (No recess, rings, or cutouts required)
 Floor Must be dead level.
 Door Ties to Adjacent Storefront or Curtain-wall System for Lateral Stability.
 Adjacent Construction Not to Bear Down on any Part of Revolving Door.



④ Horizontal Sections