

Options:

- Extended Door Heights (Contact Factory)
- Extended Canopy Heights (Contact Factory)

Installation:

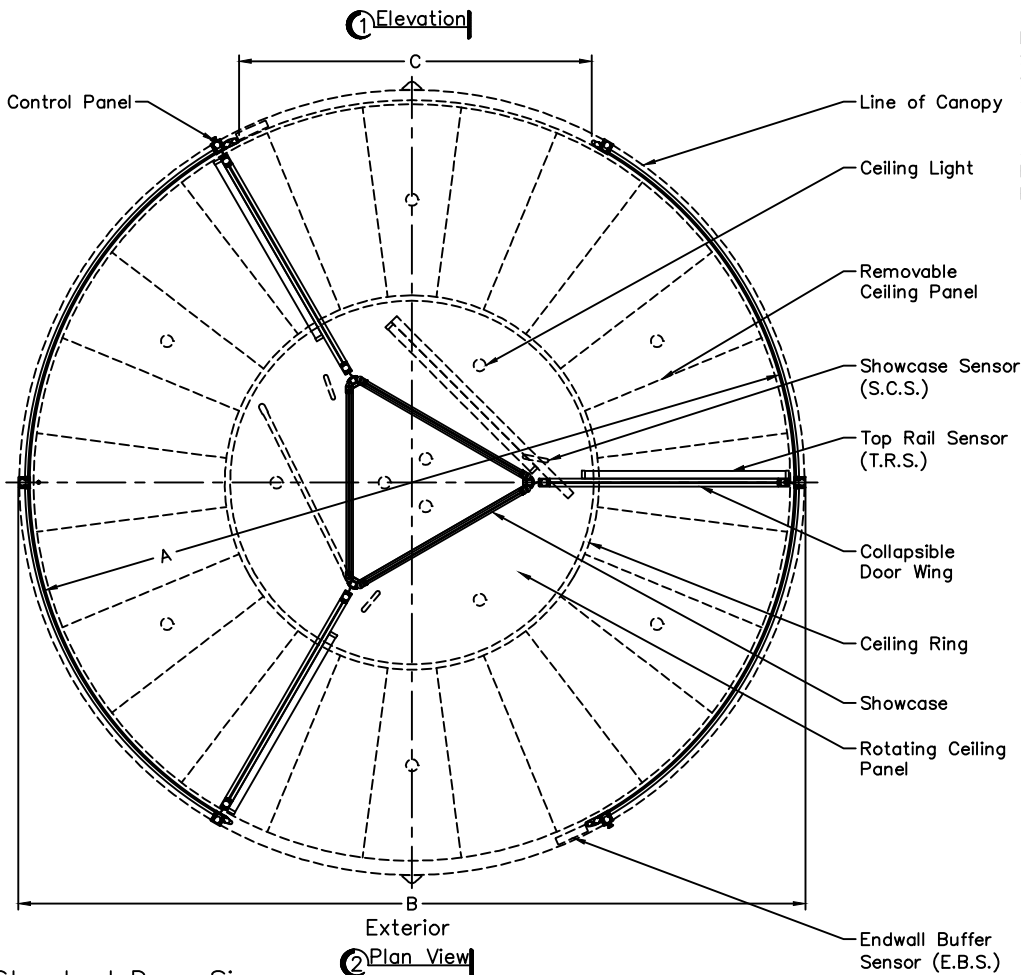
Door Installs on Finish Floor (No recess, rings, or cutouts required).

Floor Must Be Dead Level.

Power Supply from Above.

Door Ties to Adjacent Storefront or Curtain-wall System for Lateral Stability.

Adjacent Construction Not to Bear Down on any Part of Revolving Door.



Standard Door Sizes

| Nominal Diameter | Inside Diameter "A" | Outside Net Frame "B" | Throat Opening "C" |
|------------------|---------------------|-----------------------|--------------------|
| 12'-0" | 11'-9 3/4" [3600MM] | 12'-3 1/4" | 5'-5 1/8" |
| 14'-0" | 13'-9 3/8" [4200MM] | 14'-2 7/8" | 6'-4 15/16" |
| 16'-0" | 15'-9" [4800MM] | 16'-2 1/2" | 7'-4 3/4" |
| 18'-0" | 17'-8 5/8" [5400MM] | 18'-2 1/8" | 8'-4 9/16" |
| 20'-0" | 19'-8 1/4" [6000MM] | 20'-1 3/4" | 9'-4 3/8" |

