

Elevation

Options:

- Extended Door Heights (Contact Factory)
- Extended Canopy Heights (Contact Factory)

Installation:

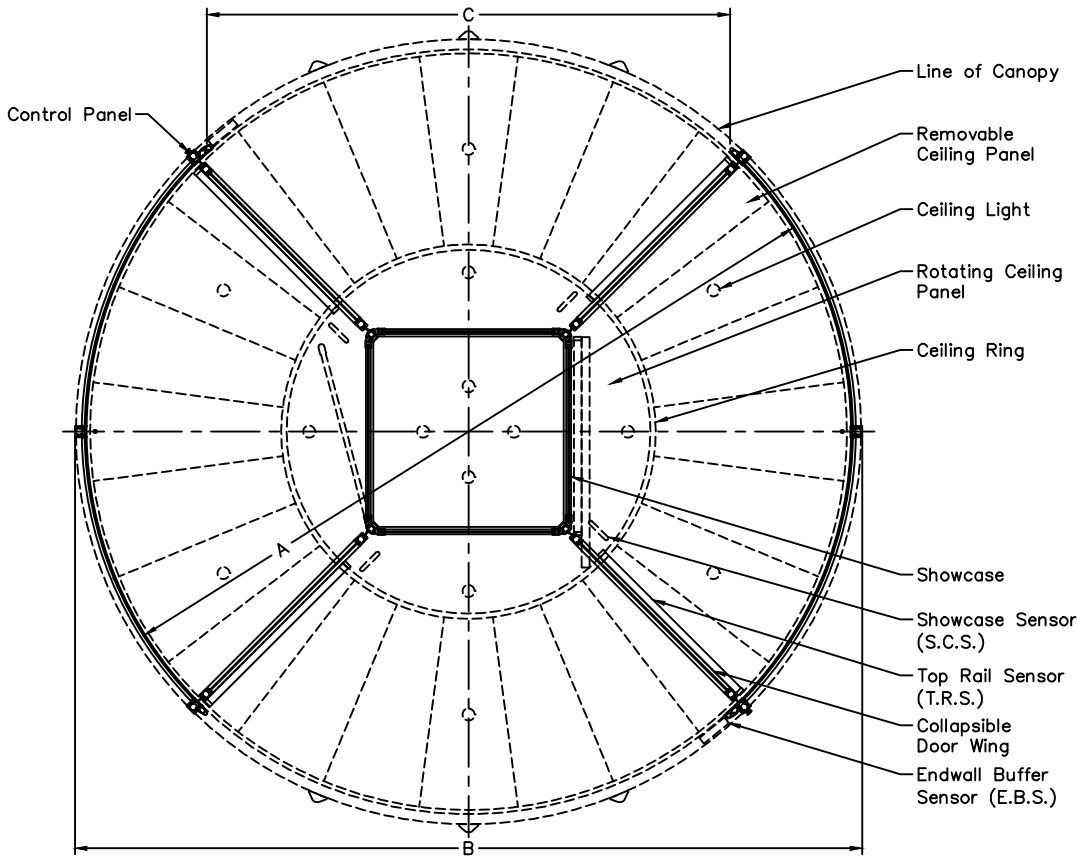
Door Installs on Finish Floor (No recess, rings, or cutouts required).

Floor Must Be Dead Level.

Power Supply from Above.

Door Ties to Adjacent Storefront or Curtain-wall System for Lateral Stability.

Adjacent Construction Not to Bear Down on any Part of Revolving Door.

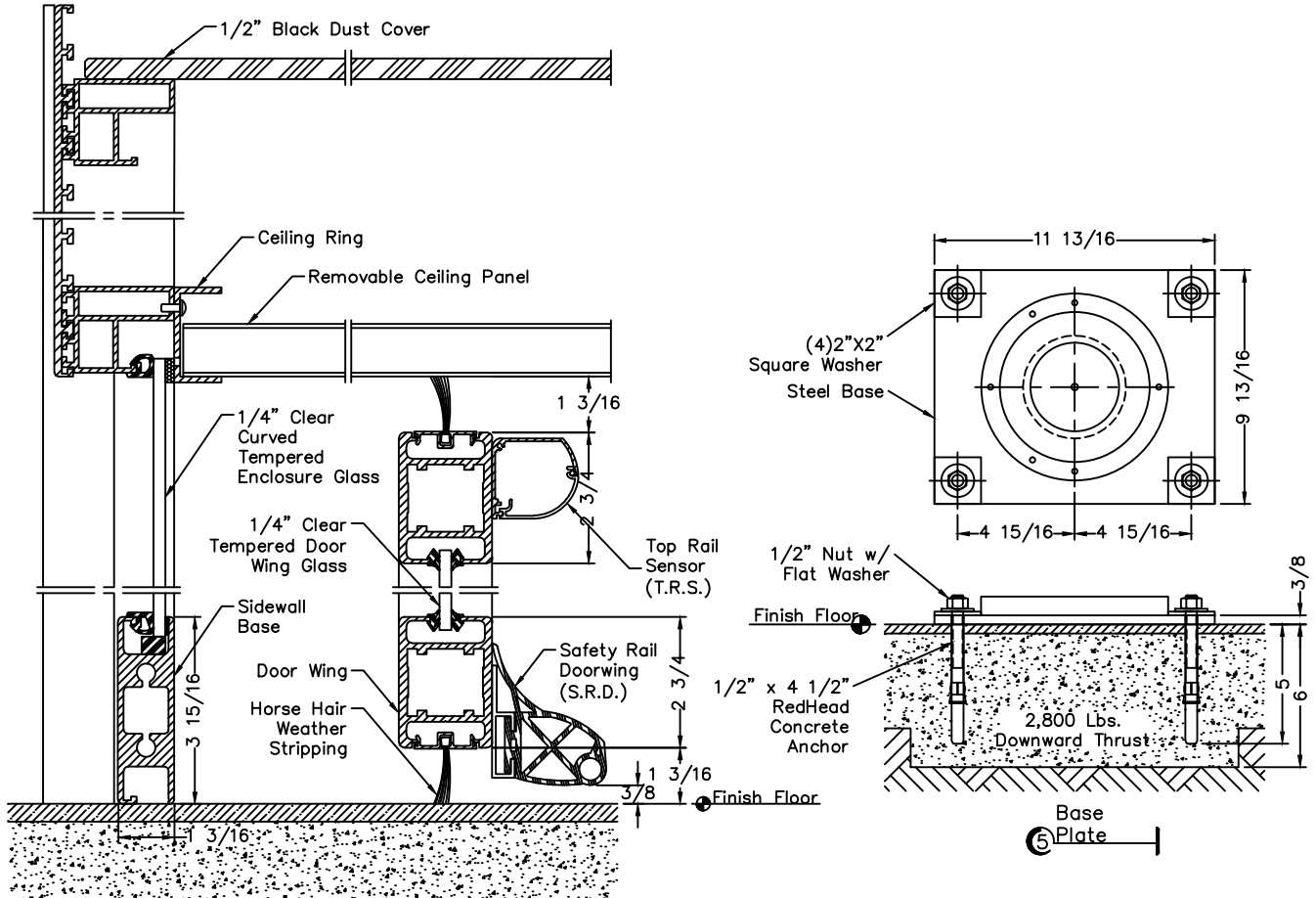


Plan View

Standard Door Sizes

Nominal Diameter	Inside Diameter "A"	Outside Net Frame "B"	Throat Opening "C"
12'-0"	11'-9 3/4" [3600MM]	12'-3 1/4"	7'-11 13/16"
14'-0"	13'-9 3/8" [4200MM]	14'-2 7/8"	9'-4 1/2"
16'-0"	15'-9" [4800MM]	16'-2 1/2"	10'-9 1/4"
18'-0"	17'-8 5/8" [5400MM]	18'-2 1/8"	12'-2"
20'-0"	19'-8 1/4" [6000MM]	20'-1 3/4"	13'-6 5/8"

402 McKinney Parkway, Lillington, NC 27546 Tel: (910) 814-8100 Fax: (910) 814-3899
http://www.boonedam.us



3 Vertical Sections

4 Horizontal Sections

