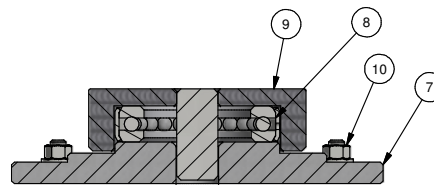


ISOMETRIC  
SCALE 1:21



SECTION A-A  
BOTTOM BEARING/BASE PLATE  
SCALE 1:3  
2 PLACES

TURNLOCK-100TS SIZES (DIMENSIONS IN INCHES)							
NOMINAL SIZE	A	B	C	D	E	F	K
96	96.25	52.15	60.00	102.00	25.38	36.00	23.51
105	105.25	57.07	60.00	111.00	28.42	39.00	26.27
114*	114.24	63.56	72.00	120.00	31.40	42.00	28.17

\*NOTE: TOP CHANNEL WIDTH IS 18.21

**GENERAL NOTES:**

TURNLOCK-100TS = 1 DIRECTION ELECTRICALLY CONTROLLED.  
TURNLOCK-100TS2 = 2 DIRECTIONS ELECTRICALLY CONTROLLED.  
TURNLOCK-100MTS = MECHANICAL UNIT.

STAINLESS STEEL CONSTRUCTION.

MINIMUM PAD SIZE SHOWN. MUST BE LEVEL WITHIN 1/4".

ALLOW 1" [25.4MM] FOR REMOVAL OF LIFT-OFF COVER.

**ELECTRICAL NOTES:**

POWER SERVICE OPTIONS:

- 24 VDC
- 110 VAC SINGLE PHASE
- 220 VAC SINGLE PHASE 50/60HZ
- 220 VAC DUAL PHASE 50/60HZ

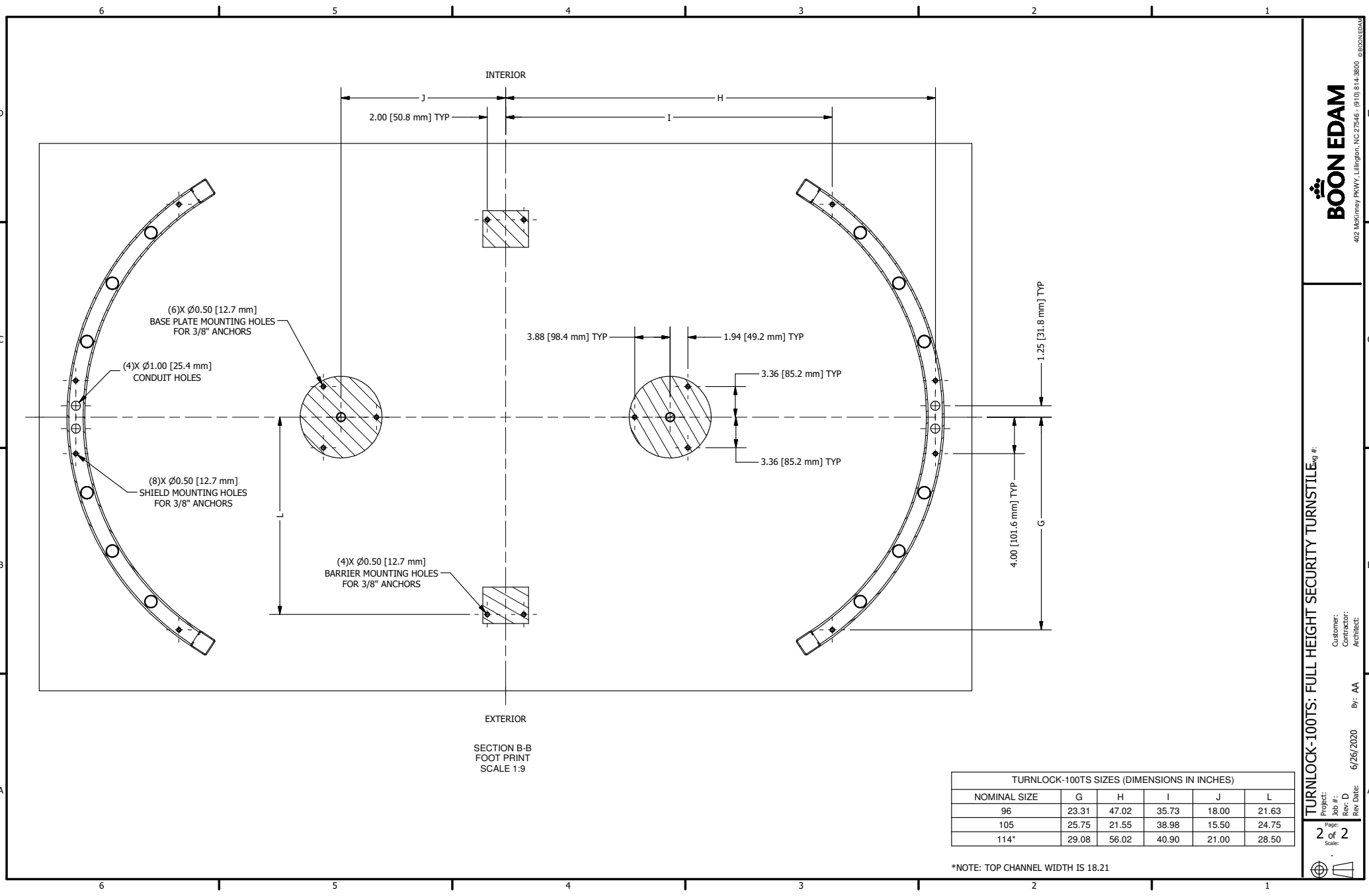
15A MAINS SERVICE REQ'D

4 LOCATIONS AVAILABLE FOR CONDUIT ACCESS.

AUTHORIZATION, FIRE ALARM REQUIRES DRY CONTACT FROM ACCESS CONTROL.

**CODED NOTES:**

- BARRIER ASSEMBLY, WELDED - STAINLESS STEEL
- SHIELD ASSEMBLY, WELDED (2) - STAINLESS STEEL
- ROTOR ASSEMBLY, WELDED (6) - STAINLESS STEEL
- CEILING PLATE (2) - STAINLESS STEEL
- MECHANISM CHANNEL - STAINLESS STEEL
- 2 PC CHANNEL COVER - STAINLESS STEEL
- BASE PLATE - ANODIZED ALUMINUM
- BOTTOM BEARING
- BOTTOM FLANGE
- ANCHOR BOLTS (18), PROVIDED



SECTION B-B  
FOOT PRINT  
SCALE 1:9

TURNLOCK-100TS SIZES (DIMENSIONS IN INCHES)					
NOMINAL SIZE	G	H	I	J	L
96	23.31	47.02	35.73	18.00	21.63
105	25.75	21.55	38.98	15.50	24.75
114*	29.08	56.02	40.90	21.00	28.50

\*NOTE: TOP CHANNEL WIDTH IS 18.21

**BOON EDAM**  
402 McKinney PKWY, Lillington, NC 27546 - (910) 814-3800

**TURNLOCK-100TS: FULL HEIGHT SECURITY TURNSTILE** Job #:

Project: Customer: Contractor: Architect: By: AA  
 Rev: D  
 Rev Date: 6/26/2020

Page: 2 of 2  
 Scale: