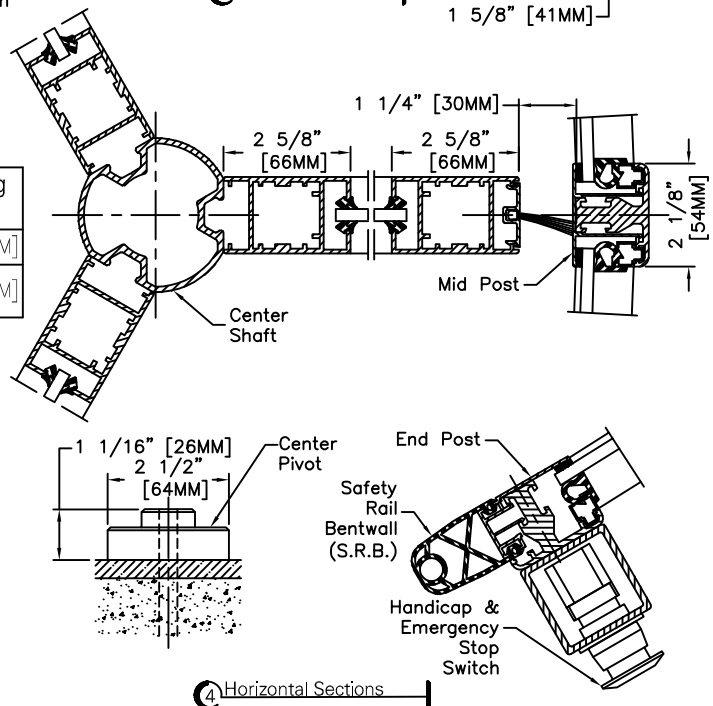


Standard Door Sizes

Nominal Diameter	Inside Diameter "A"	Outside Net Frame "B"	Throat Opening "C"
9' 9"	9'-9" [2975MM]	10'-0" [3050MM]	4'-6 1/8" [1375MM]
11' 9"	11'-9" [3580MM]	12'-0" [3660MM]	5'-6 1/8" [1680MM]



Options:

- Extended door heights (contact factory)
- Extended canopy heights (contact factory)
- 2 point lock
- Medium style door wing
- One piece sidewall glass

Installation:

Door installs on finish floor (no recess, rings, or cutouts required).
Floor must be dead level.
Power supply from above.
Door ties to adjacent storefront or curtain-wall system for lateral stability.
Adjacent construction not to bear down on any part of revolving door.