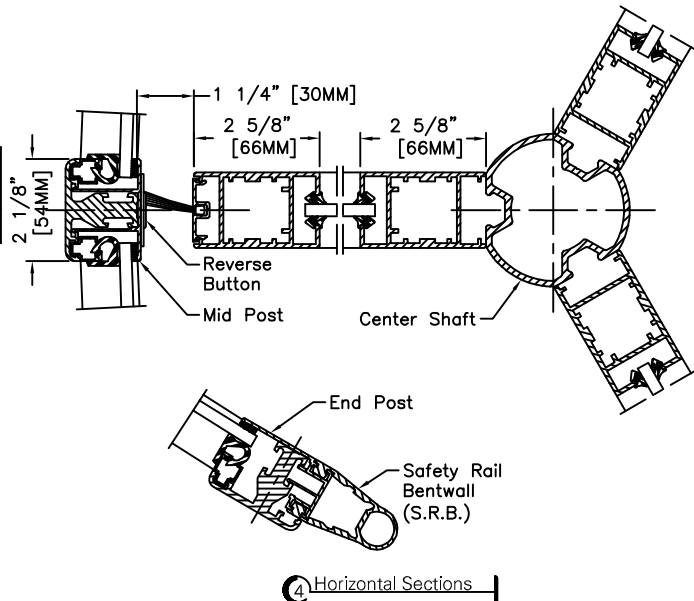


Standard Door Sizes

Nominal Diameter	Inside Diameter "A"	Outside Net Frame "B"	Throat Opening "C"
9' 9"	9'-9" [2975MM]	10'-0" [3050MM]	4'-6 1/8" [1375MM]



Options:

- Extended canopy heights (Contact factory)
- Floor contact mat: Surface mount or recessed (requires 1/2" recess)

Installation:

- Door installs on finish floor (No recess, rings, or cutouts required).
- Floor must be dead level.
- Power supply from above.
- Door ties to adjacent storefront or curtain-wall system for lateral stability.
- Adjacent construction not to bear down on any part of revolving door.