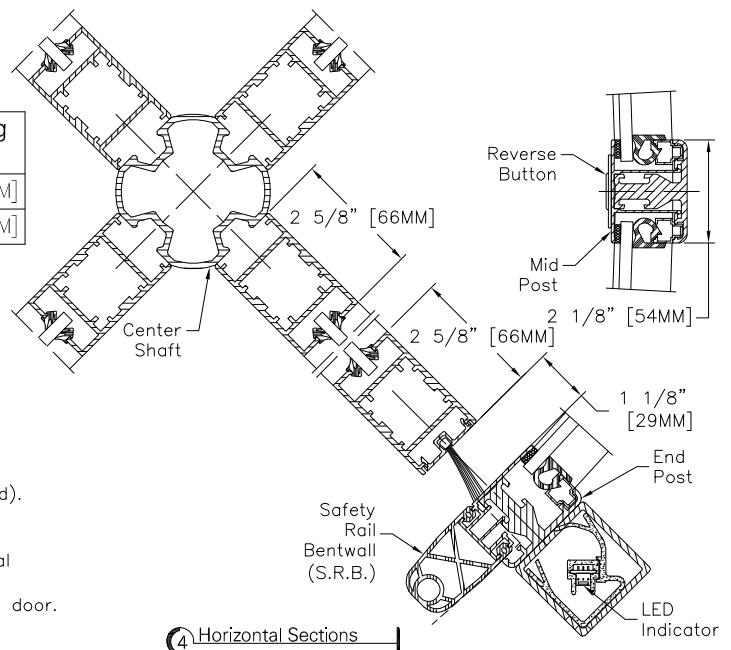


Standard Door Sizes

| Nominal Diameter | Inside Diameter "A" | Outside Net Frame "B" | Throat Opening "C" |
|------------------|---------------------|-----------------------|--------------------|
| 6' 6" | 6'-6" [1980MM] | 6'-9" [2055MM] | 4'-3 3/4" [1315MM] |
| 7' 0" | 7'-0" [2135MM] | 7'-3" [2210MM] | 4'-8" [1420MM] |



Options:

- Extended canopy heights (contact factory).
- Sterovision (Anti-piggybacking).

Installation:

Door installs on finish floor (no recess, rings, or cutouts required).
Floor must be dead level.
Power supply from above.
Door ties to adjacent storefront or curtain-wall system for lateral stability.
Adjacent construction not to bear down on any part of revolving door.