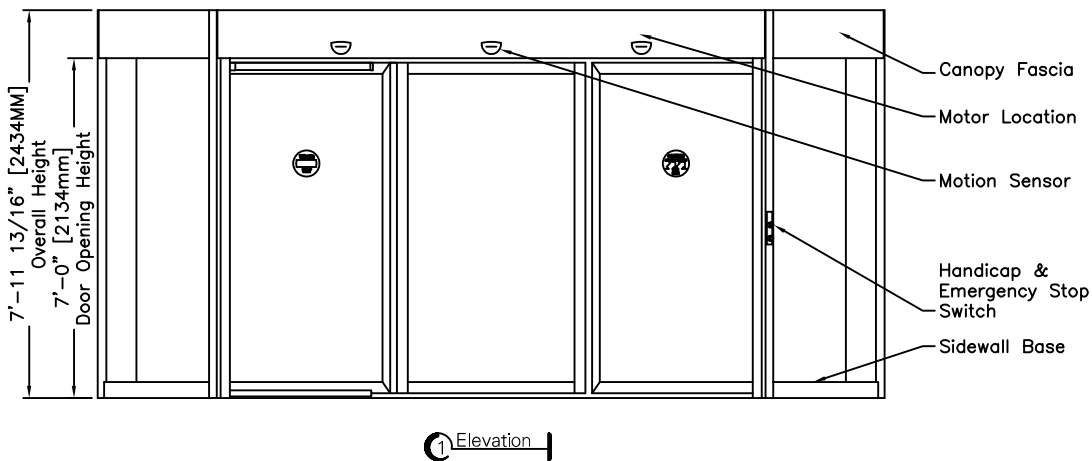


**Options:**

- Extended door heights (Contact factory)
- Extended canopy heights (Contact factory)

**Installation:**

- Door Installs on finish floor (No recess, rings, or cutouts required).
- Floor must be dead level.
- Power supply from above.
- Door ties to adjacent Storefront or curtain-wall system for lateral stability.
- Adjacent construction not to bear down on any part of revolving door.



**Standard Door Sizes**

Nominal Diameter	Inside Diameter "A"	Outside Net Frame "B"	Throat Opening "C"
12' 0"	11'-9" [3580MM]	12'-2 1/2" [3720MM]	7'-9 3/4" [2380MM]
14' 0"	13'-9" [4190MM]	14'-2 1/2" [4330MM]	9'-2 3/4" [2810MM]
16' 0"	15'-9" [4800MM]	16'-2 1/2" [4940MM]	10'-7 3/4" [3245MM]
18' 0"	17'-9" [5410MM]	18'-2 1/2" [5550MM]	12'-0 5/8" [3675MM]
20' 0"	19'-9" [6020MM]	20'-2 1/2" [6160MM]	13'-5 5/8" [4105MM]

