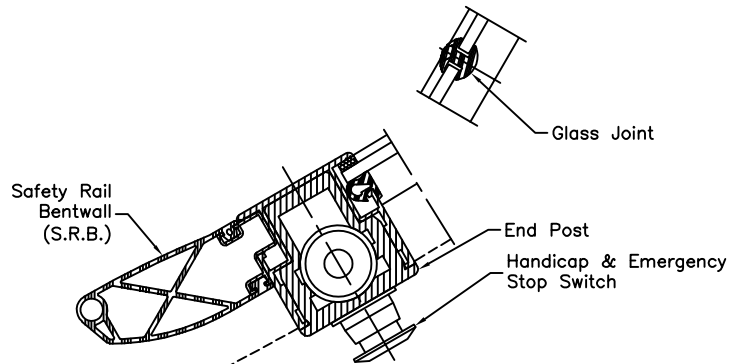
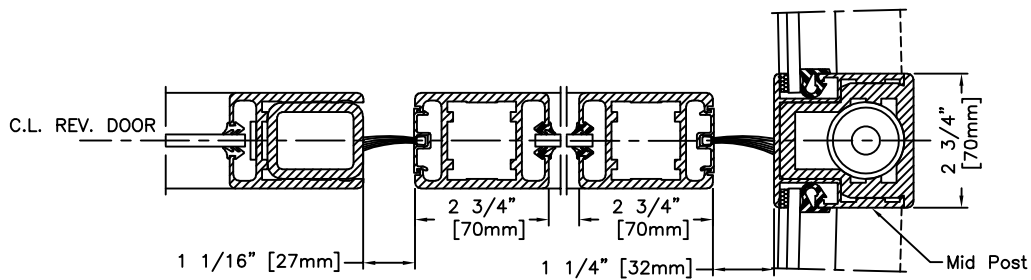
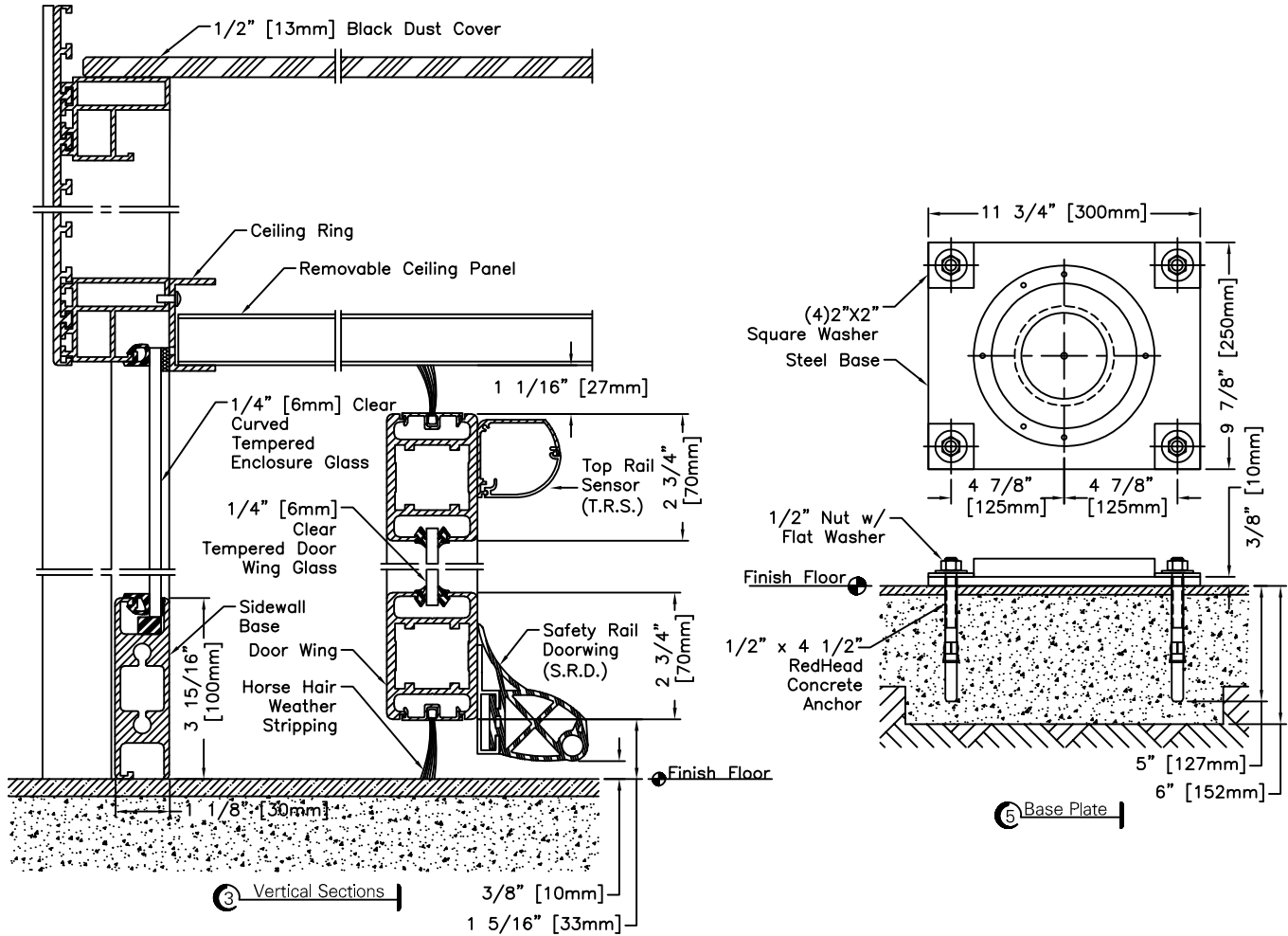


Standard Door Sizes

Nominal Diameter	Inside Diameter "A"	Outside Net Frame "B"	Throat Opening "C"
12' 0"	11'-9" [3580MM]	12'-2 1/2" [3720MM]	5'-3 1/4" [1610MM]
14' 0"	13'-9" [4190MM]	14'-2 1/2" [4330MM]	6'-3 1/4" [1915MM]
16' 0"	15'-9" [4800MM]	16'-2 1/2" [4940MM]	7'-3 1/4" [2215MM]
18' 0"	17'-9" [5410MM]	18'-2 1/2" [5550MM]	8'-3 1/4" [2520MM]
20' 0"	19'-9" [6020MM]	20'-2 1/2" [6160MM]	9'-3 1/4" [2825MM]



4 Horizontal Sections