

SECTION A-A  
BOTTOM BEARING/BASE PLATE  
SCALE 1:3  
2 PLACES

**GENERAL NOTES:**

TURNLOCK-100TA = 1 DIRECTION ELECTRICALLY CONTROLLED.  
TURNLOCK-100TA2 = 2 DIRECTIONS ELECTRICALLY CONTROLLED.  
TURNLOCK-100MTA = MECHANICAL UNIT.

ALUMINUM/STAINLESS STEEL CONSTRUCTION.

MINIMUM PAD SIZE SHOWN. MUST BE LEVEL WITHIN 1/4".

ALLOW 1" [203MM] FOR REMOVAL OF 2 PC COVER.

**ELECTRICAL NOTES:**

POWER SERVICE OPTIONS:

1. 24 VDC
2. 110 VAC SINGLE PHASE
3. 220 VAC SINGLE PHASE 50/60HZ
4. 220 VAC DUAL PHASE 50/60HZ

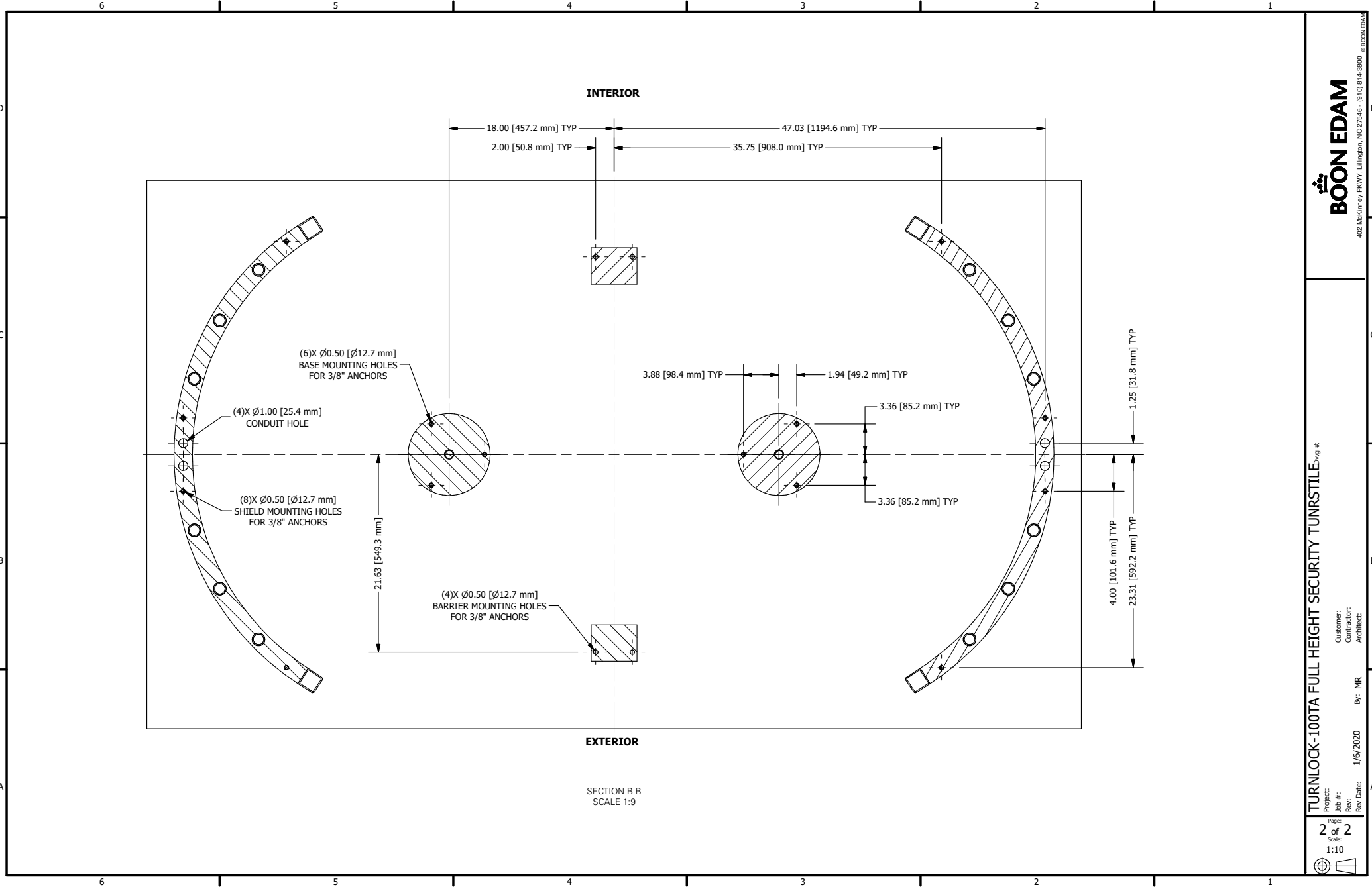
15A MAINS SERVICE REQ'D

4 LOCATIONS AVAILABLE FOR CONDUIT ACCESS.

AUTHORIZATION, FIRE ALARM REQUIRES DRY CONTACT FROM ACCESS CONTROL.

**CODED NOTES:**

1. BARRIER ASSEMBLY, WELDED - STAINLESS STEEL
2. SHIELD ASSEMBLY, WELDED (2) - ANODIZED ALUMINUM
3. ROTOR ASSEMBLY, WELDED (6) - ANODIZED ALUMINUM WITH STAINLESS STEEL ARMS
4. CEILING PLATE (2) - ANODIZED ALUMINUM
5. MECHANISM CHANNEL - ANODIZED ALUMINUM
6. 2 PC CHANNEL COVER - STAINLESS STEEL
7. BASE PLATE - ANODIZED ALUMINUM
8. BOTTOM BEARING
9. BOTTOM FLANGE
10. ANCHOR BOLTS (18), PROVIDED



**BOON EDAM**  
402 McKinney PKWY., Lillington, NC 27546 - (910) 814-3800 © BOON EDAM

---

TURNLOCK-100TA FULL HEIGHT SECURITY TURNSTILE Draw #:

Project: \_\_\_\_\_ Customer: \_\_\_\_\_  
 Job #: \_\_\_\_\_ Contractor: \_\_\_\_\_  
 Rev: \_\_\_\_\_ Rev Date: \_\_\_\_\_  
 By: MR 1/6/2020 Architect: \_\_\_\_\_

---

Page: 2 of 2  
 Scale: 1:10