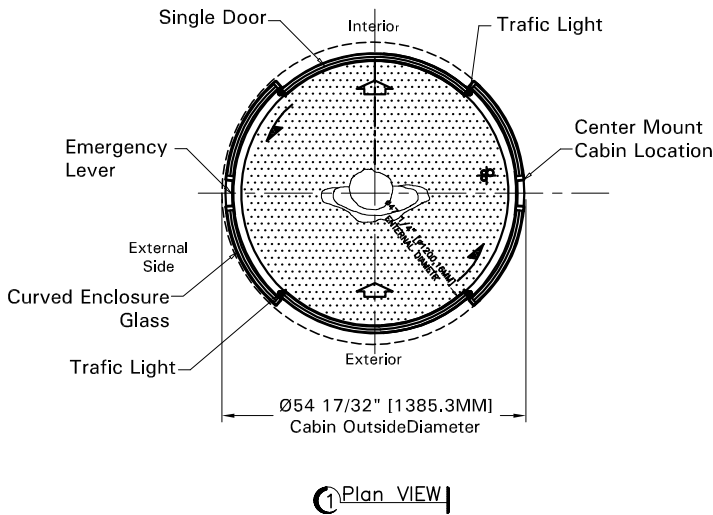
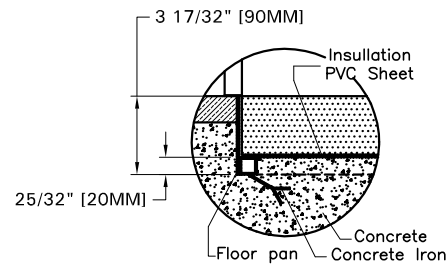
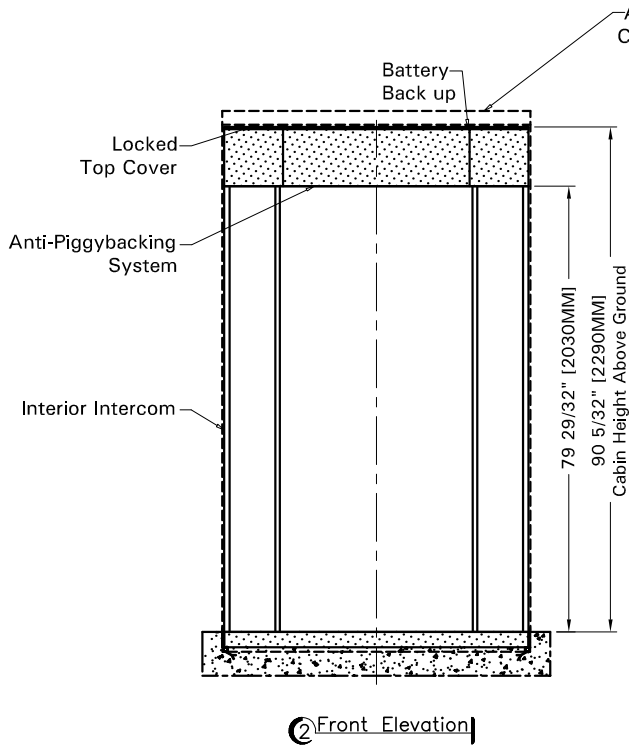


# TAP-200(2W) MULTIPURPOSE SECURITY PORTAL



### Options:

- SEP-SPALC, Side panel Alcove for Access Control System Equipment / standard.
- SEP-SPALCL, Side Panel Alcove for Access Control System Equipment / large.
- SEP-IHHB, Interior Horizontal Access Control housing / bracket.
- SEP-IVHB, Interior Vertical Access Control housing - bracket.
- SEP-FMDC, Metal Detector columns.
- SEP-MDCF, Metal Detection CEIA 02PN8 CF.
- SEP-FK200, Floor Installation Kit (pan for recessed installed portal).
- SEP-STC200, Satin Stainless Steel Top Cover..
- SEP-SM200 Surface Mounting (Floor) Track System.
- SEP-BPD200, Bi-Parting Doors.
- SEP-BRG200, Bullet resistant glass 26-27 (mm) BR3 - UNI EN 1063, (P6B - UNI EN 1063)

### Installation:

Floor Must be Dead Level.  
 Set the Enclosure Base in sealant and anchor securely in place.  
 Power Supply from Above.