

GENERAL NOTES:

TURNLOCK-100EC = 1 DIRECTION ELECTRICALLY CONTROLLED.
TURNLOCK-100EC2 = 2 DIRECTIONS ELECTRICALLY CONTROLLED.
TURNLOCK-100C = MECHANICAL UNIT.

GALVANIZED STEEL CONSTRUCTION.

MINIMUM PAD SIZE SHOWN. MUST BE LEVEL WITHIN 1/4".

BRACE BARRIER POST AT TOP TO ADJACENT SURFACE.

ALLOW 1" [25.4MM] FOR REMOVAL OF 2 PC COVER.

CCW ENTRANCE SHOWN

ELECTRICAL NOTES:

POWER SERVICE OPTIONS:

1. 24 VDC
2. 110 VAC SINGLE PHASE
3. 220 VAC SINGLE PHASE 50/60HZ
4. 220 VAC DUAL PHASE 50/60HZ

15A MAINS SERVICE REQ'D

4 LOCATIONS AVAILABLE FOR CONDUIT ACCESS.

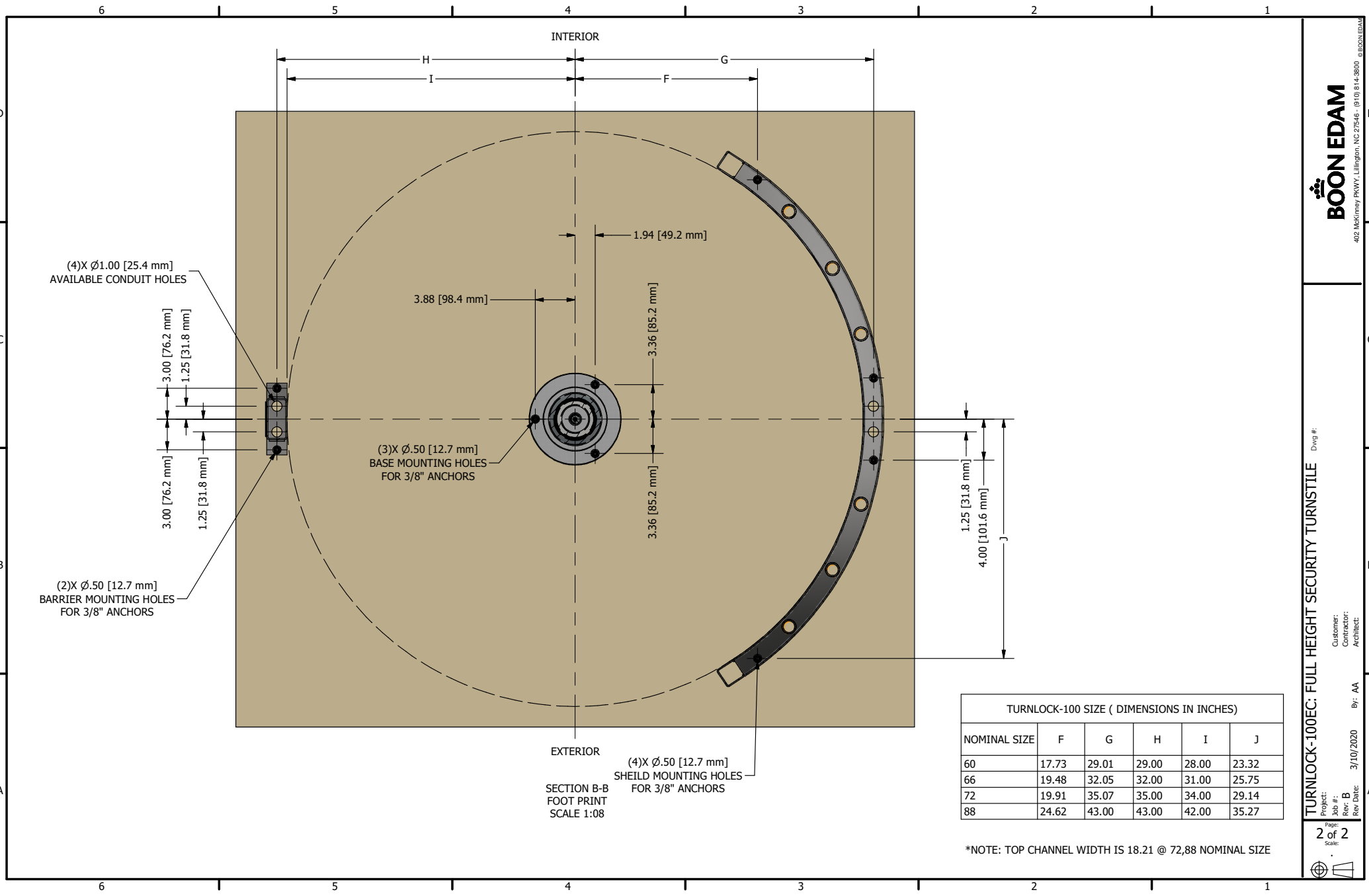
AUTHORIZATION, FIRE ALARM REQUIRES DRY CONTACT FROM ACCESS CONTROL.

CODED NOTES:

1. BARRIER ASSEMBLY, WELDED - GALVANIZED STEEL
2. SHIELD ASSEMBLY, WELDED - GALVANIZED STEEL
3. ROTOR ASSEMBLY, WELDED (3) - GALVANIZED STEEL
4. CEILING PLATE - GALVANIZED STEEL
5. MECHANISM CHANNEL - ANODIZED ALUMINUM
6. 2 PC CHANNEL COVER - STAINLESS STEEL
7. BASE PLATE - ANODIZED ALUMINUM
8. BOTTOM BEARING
9. BOTTOM FLANGE
10. ANCHOR BOLTS (9), PROVIDED

TURNLOCK-100 SIZE (DIMENSIONS IN INCHES)						
NOMINAL SIZE	A	B	C	D	E	K
60	60.13	52.15	60.00	66.00	25.50	23.67
66	66.13	57.09	66.00	72.00	28.50	26.36
72	72.18	63.73	72.00	78.00	31.50	28.34
88	88.25	77.68	96.00	96.00	39.50	35.28

*NOTE: TOP CHANNEL WIDTH IS 18.21 @ 72,88 NOMINAL SIZE



TURNLOCK-100 SIZE (DIMENSIONS IN INCHES)

NOMINAL SIZE	F	G	H	I	J
60	17.73	29.01	29.00	28.00	23.32
66	19.48	32.05	32.00	31.00	25.75
72	19.91	35.07	35.00	34.00	29.14
88	24.62	43.00	43.00	42.00	35.27

*NOTE: TOP CHANNEL WIDTH IS 18.21 @ 72,88 NOMINAL SIZE