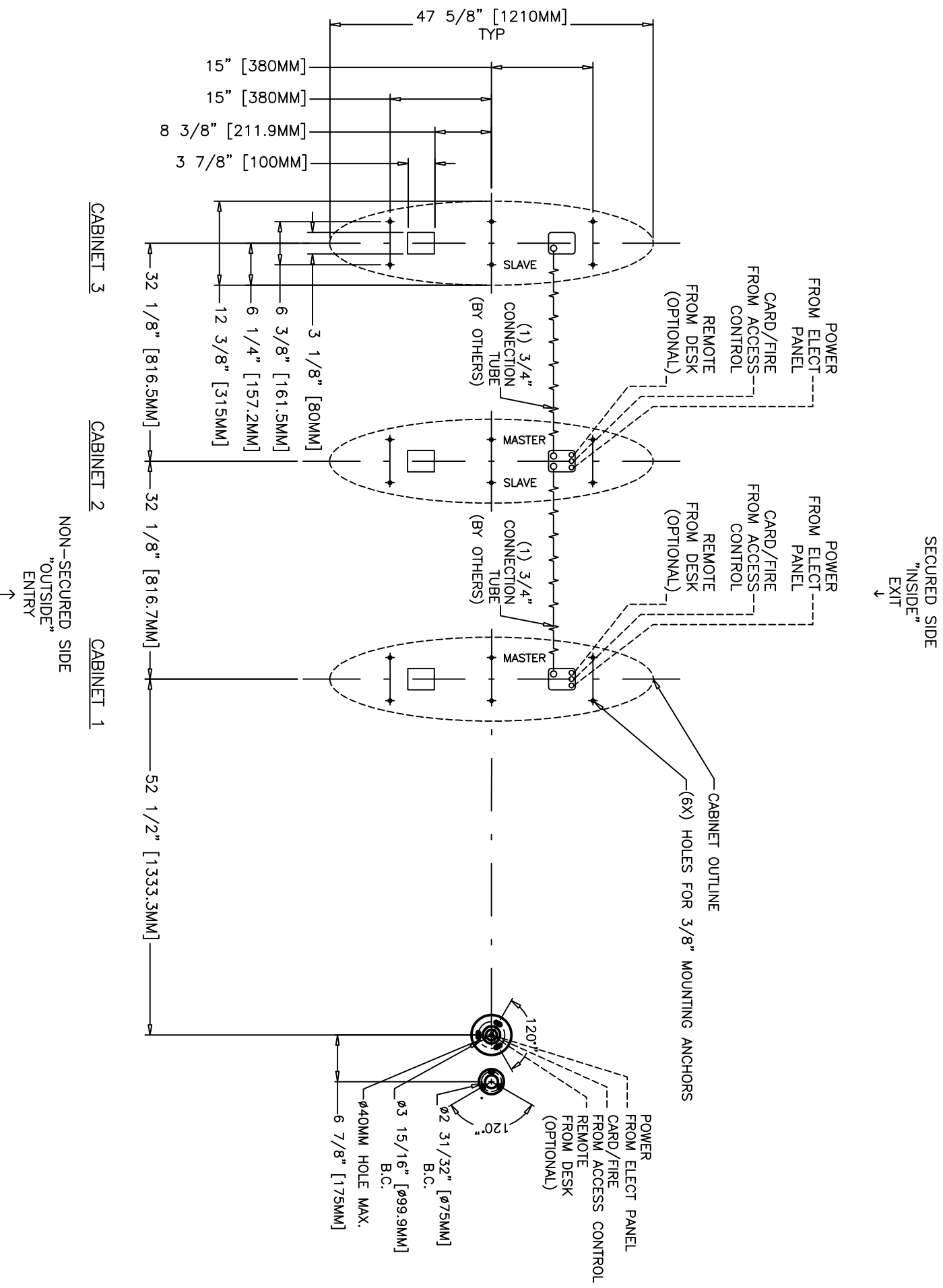


ELECTRICAL NOTES:

POWER SERVICE REQ'D:
 220VAC (1)PHASE 60HZ, 15A, NEUTRAL, GROUND
 ALL CONDUIT BY OTHERS



| REV | DESCRIPTION | PAGE | DATE |
|-----|-----------------------|--------|--------------|
| A | REVISE CONDUIT SCHEME | 2 OF 2 | 07/11/13 JIB |
| . | SUBMITTAL | 2 OF 2 | 09/17/12 EM |

REVISION LOG

SL-300: 2 LANE ARRAY; 2 STD 1 WL-900

Project: -
 Architect: -
 Customer: -

Job #: -
 Contractor: -

Date: 07/11/13 JB
 Rev: A



402 McKinney Parkway, Lillington, NC 27546 - (910) 814-8100 www.boonedam.us

Scale: 3/4" = 1'