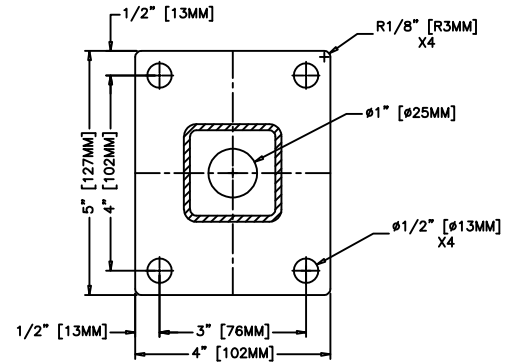
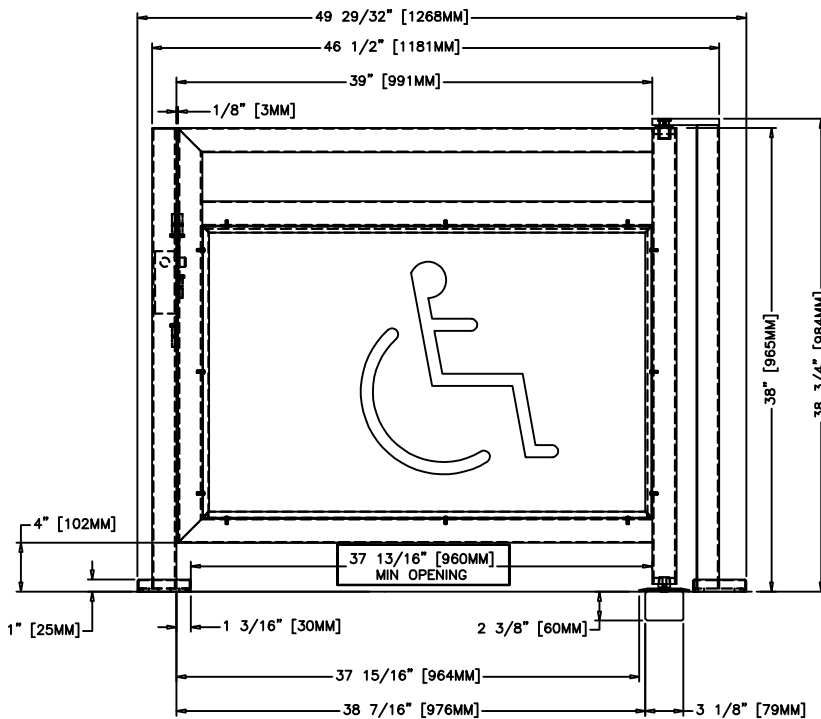


① PLAN VIEW

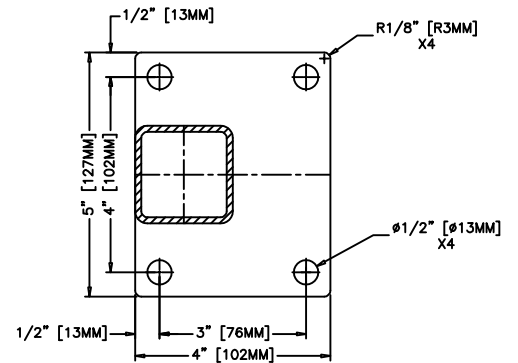
BELOW FLOOR CLOSER CAN BE MOUNTED AT 0°, +90°, OR -90°



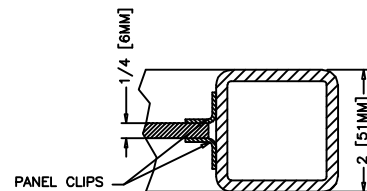
LATCH POST FLANGE DETAIL



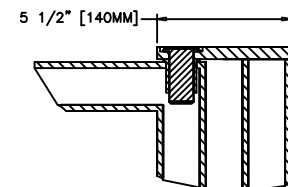
② FRONT ELEVATION



HINGE POST FLANGE DETAIL



GLASS DETAIL



HINGE DETAIL

OPTIONS:

- ONE WAY (90°) LH OR RH SWING
- MATERIAL: #4 SATIN STAINLESS STEEL (STD), POWDER COATED STAINLESS STEEL (OPTIONAL)
- BELOW FLOOR HYDRAULIC CLOSER (SHOWN)- ABOVE FLOOR(OPTIONAL)
- ELECTRIC LOCK-ELECTRIC DEADBOLT (SHOWN), MAGLOCK, OR ELECTRIC STRIKE + PANIC BAR (OPTIONAL)
- MECHANICAL LOCK-MECHANICAL DEADBOLT
- REMOTE PUSHBUTTON (OPTIONAL)
- POWER SUPPLY - 24VDC (OPTIONAL)

INSTALLATION:

- GATE INSTALLS ON FINISH FLOOR
- FLOOR MUST BE DEAD LEVEL
- GATE IS FREE-STANDING
- CLOSER UNIT MOUNTS IN THE FLOOR (ABOVE FLOOR CLOSER OPTIONAL)