



**BOON EDAM**

Manual Revolving Door Storefront Connections

Revolving doors are the perfect complement to a building's unique design, and Boon Edam's manual doors can be connected to virtually any facade in a variety of ways. Connections enable you to optimize a building's space utilization, create a dramatic statement, or even provide additional shelter for people and the door from the outside elements. In short, connections can create unique entrances that meet a wide range of needs.

 *your entry experts*

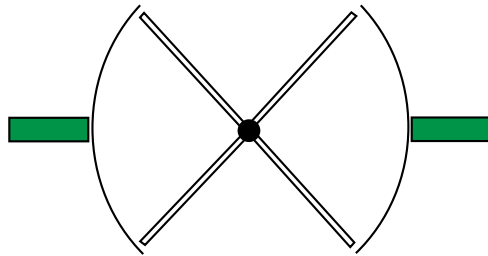


Interior vs. Exterior

When choosing the appropriate manual revolving door connection it is important to consider the effects of having the door mounted on the interior versus the exterior of the building. A protective building overhang is required for any door that is exterior mounted, because left unprotected, a revolving door is susceptible to the weathering effects of rain and snow, resulting in increased maintenance costs and a shorter lifespan.

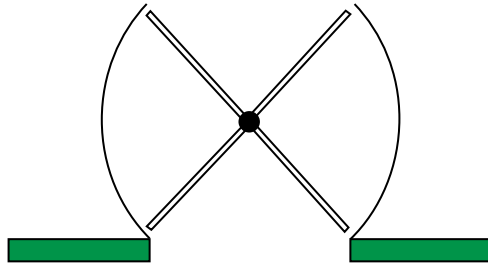
Mid-Post Connection

The most common connection used by architects and building owners is the mid-post connection. Half of the door resides inside the building, while the other half protrudes beyond the building envelope.*



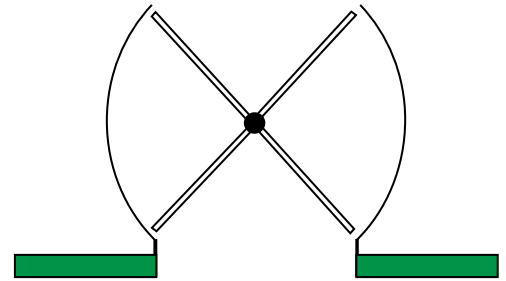
Throat Opening Connection

A throat opening connection is ideal for saving space. The revolving door joins directly to the building and will reside either completely inside or outside the building.*



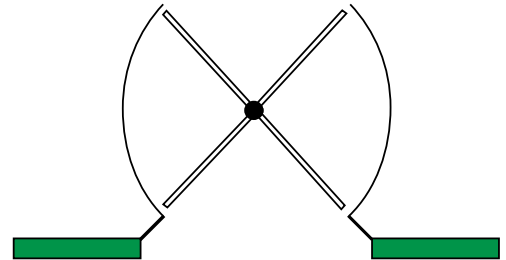
Straight Keyhole Connection


Whereas the throat opening connection involves joining the revolving door directly to the building, a standard keyhole connection uses extensions to bring the door away from, or into, the building.**



Angled Keyhole Connection

Angled keyhole connections utilize 45° angled extensions that bring the door away from the building, and can be mounted at the interior or exterior.**



-  Building facade by others
- * No additional connection material needed
- ** Boon Edam supplies all connection material